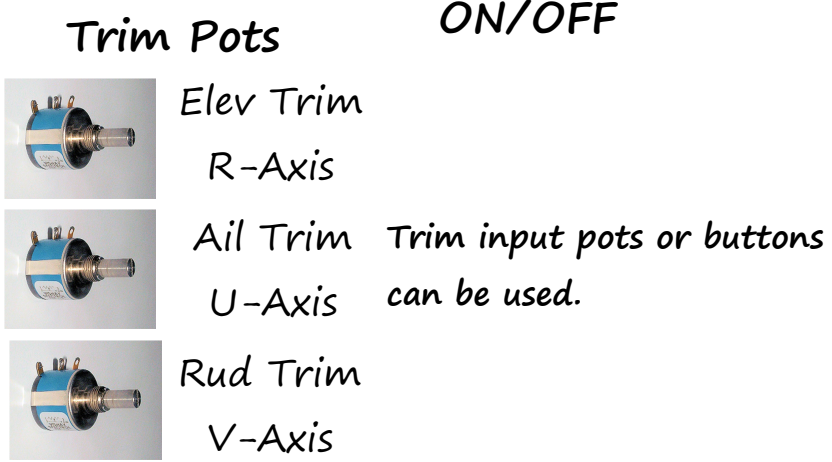
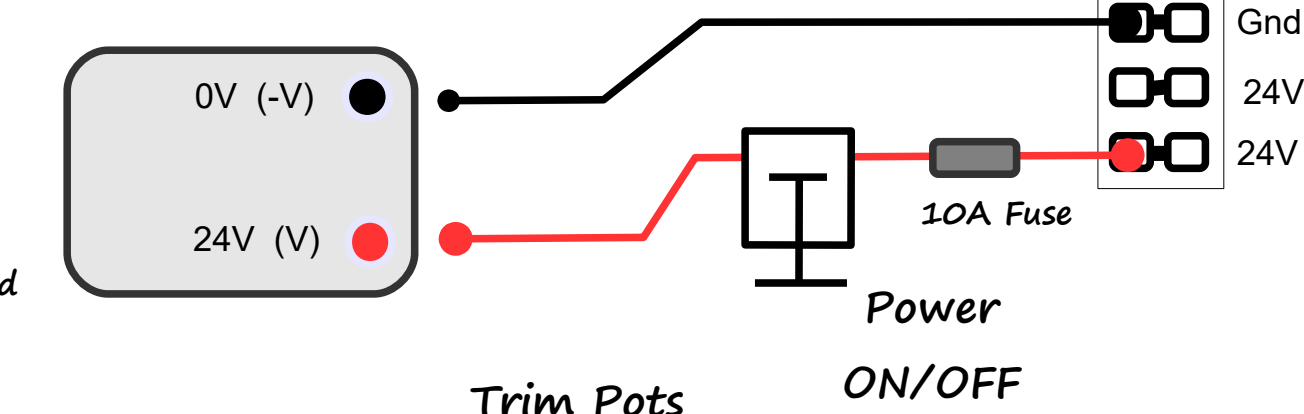
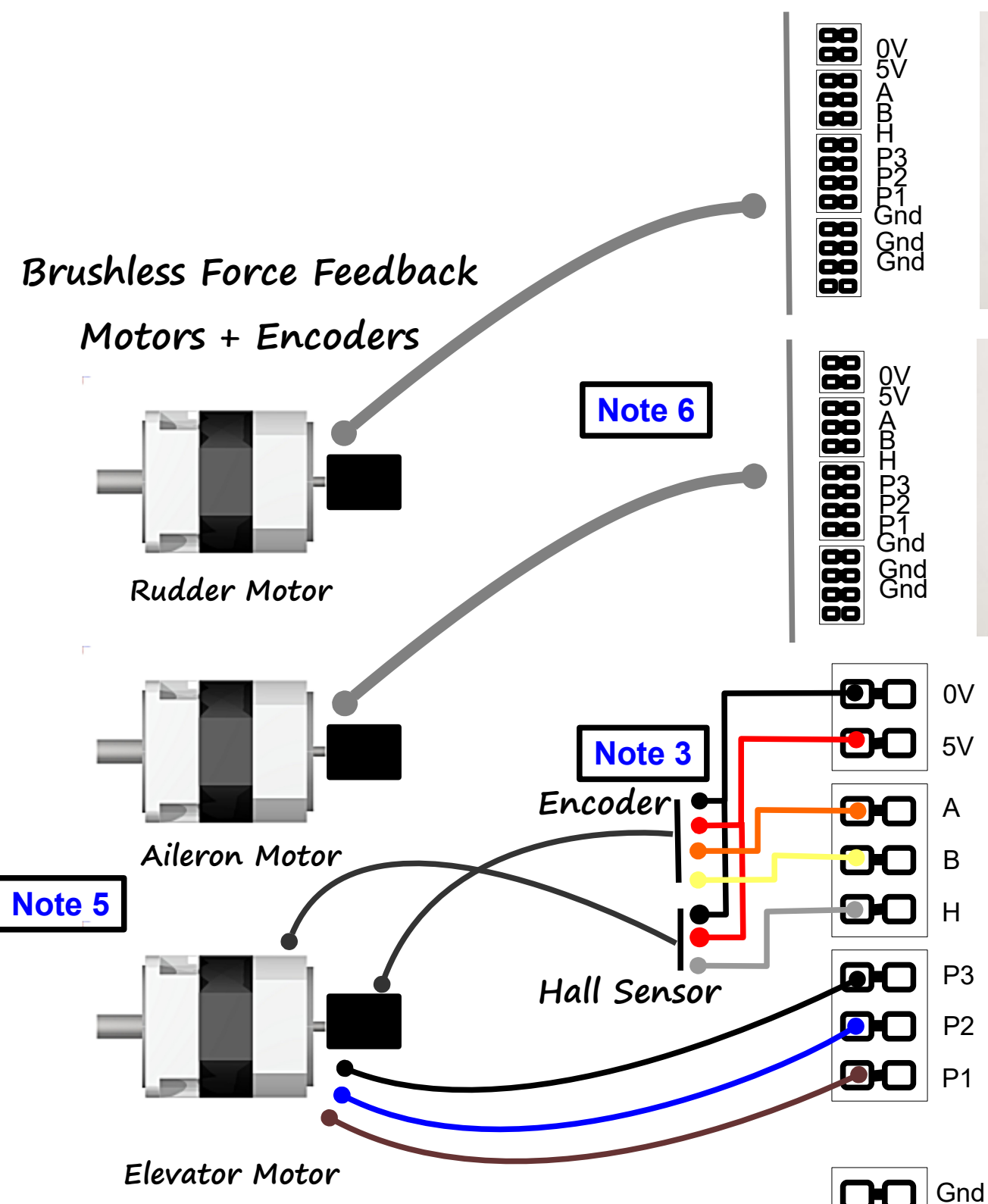


BFF CL System – System Wiring for CL_SPU_USB + BLDRV3 cards

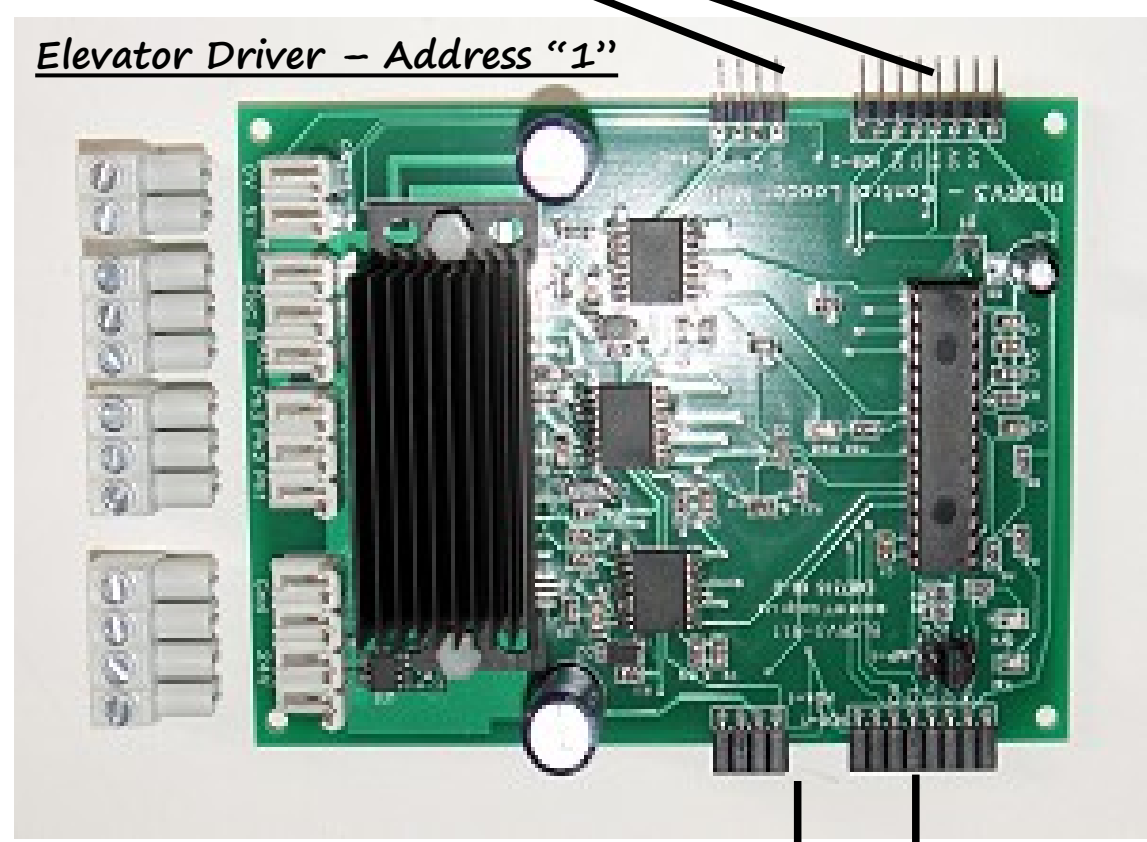
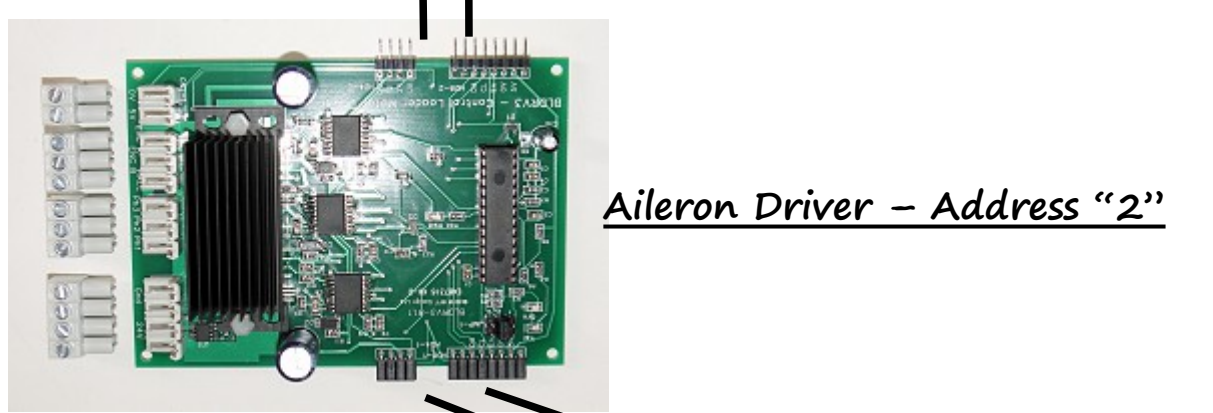
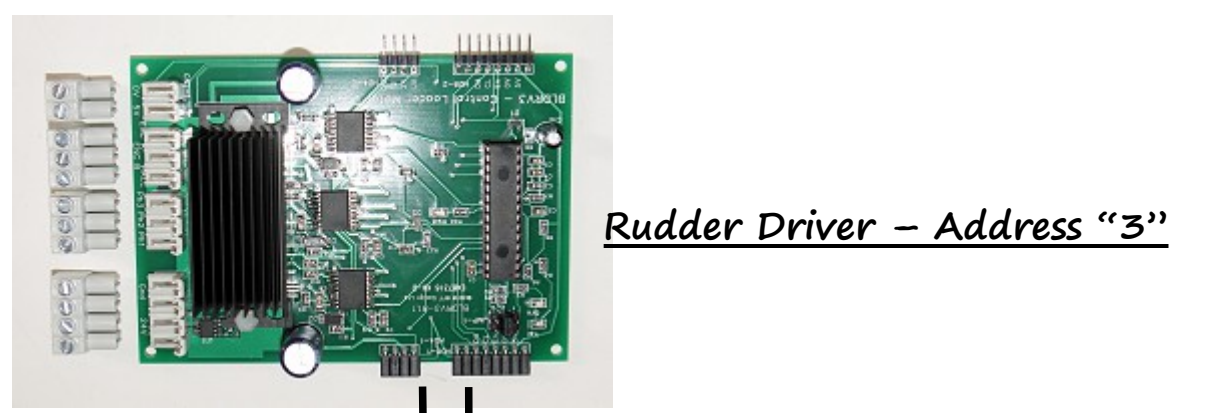
Note – PLEASE READ IN CONJUNCTION WITH ACCOMPANYING NOTES

IMPORTANT
PLEASE READ
DATA SHEETS
FOR CORRECT
CABLE COLOURS.

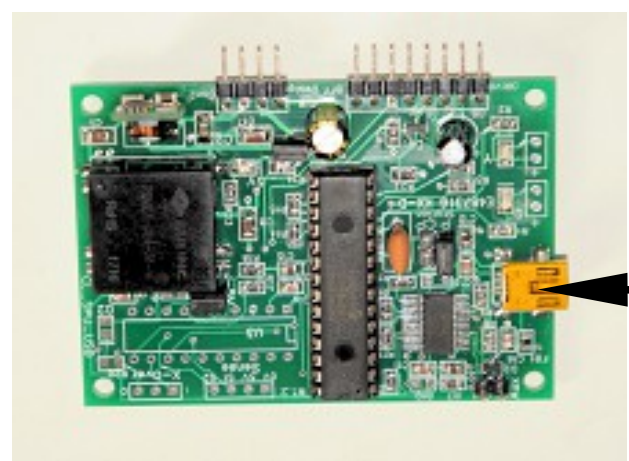
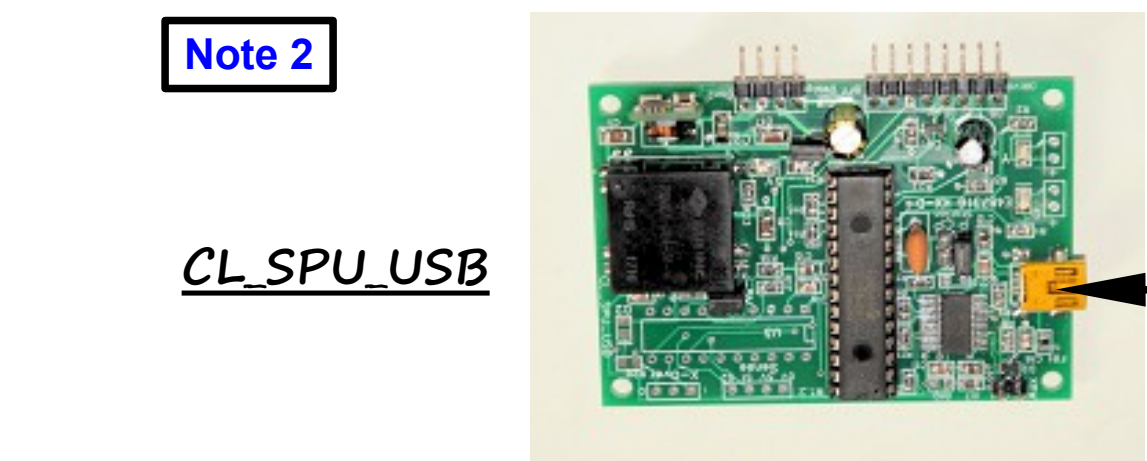
COLOURS SHOWN
IN DIAGRAM ARE
ILLUSTRATIVE ONLY.



Note 4
Leo Bodnar
BU0836(A)
Joystick Card
or similar.. for
trim pot or button
inputs.



CL_SPU_USB and BLDRV3's are normally directly connected as shown



Note 1
PC running BFF CL Software &
FS9/X with FSUIPC installed,
or X-Plane with XPUIPC.



Note 7
USB Cable

Note 2

Note 8

Shielded USB Cable