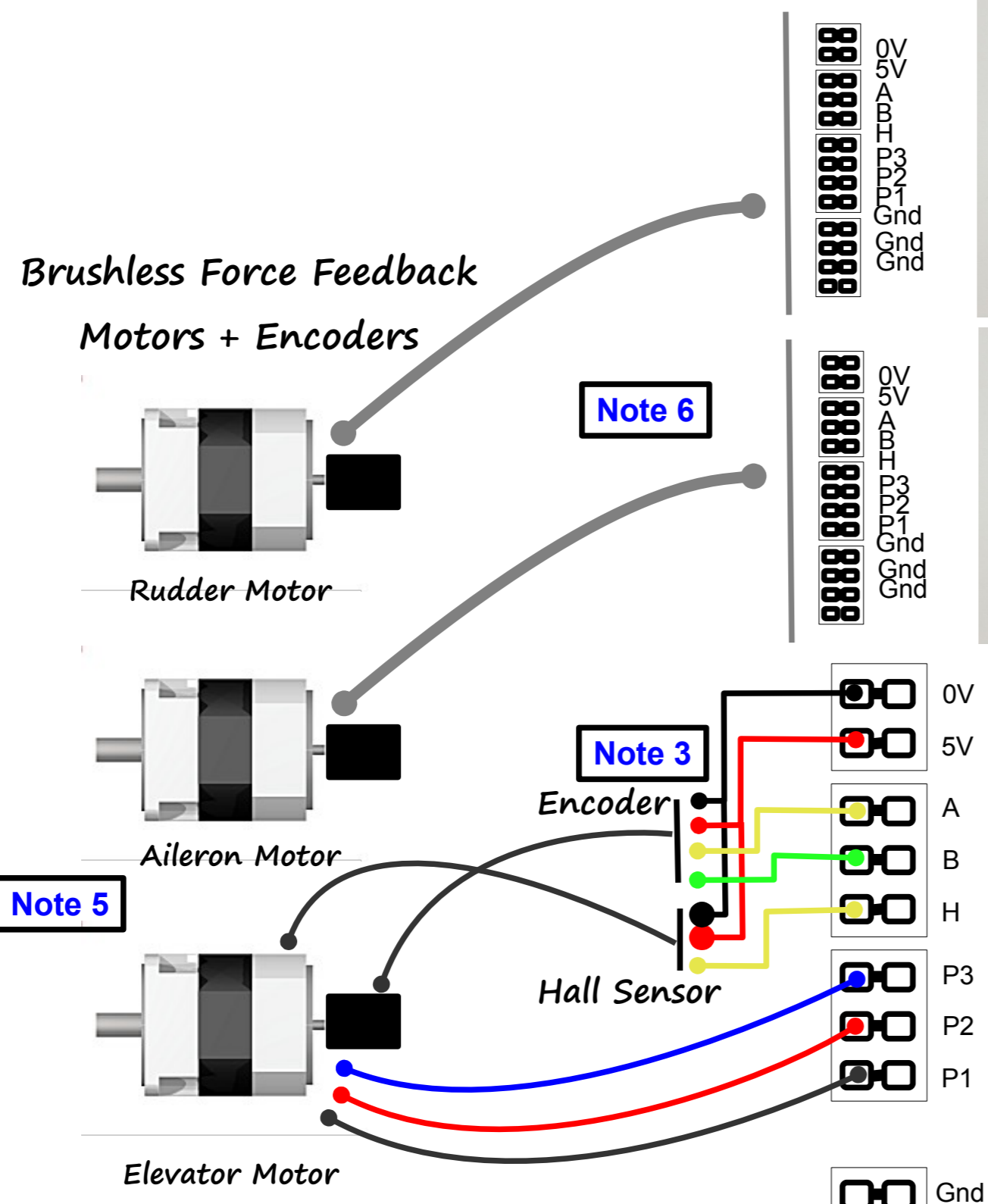


BFF CL System – System Wiring for CL_SPU + BLDRV2 cards

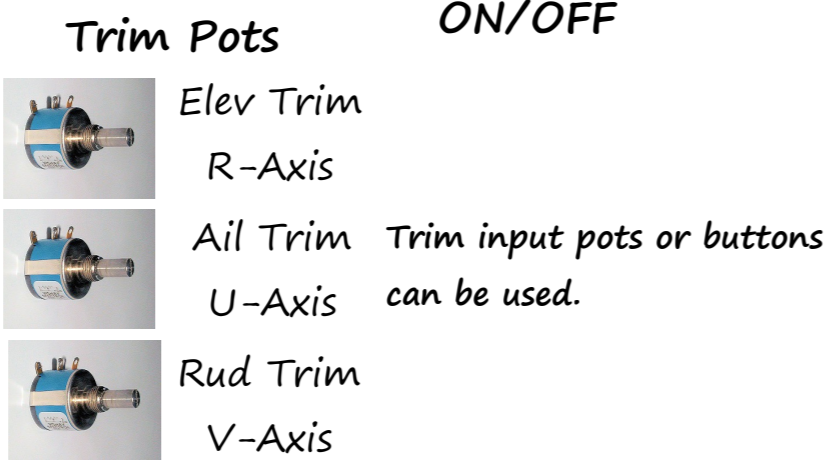
Note – PLEASE READ IN CONJUNCTION WITH ACCOMPANYING NOTES

IMPORTANT
PLEASE READ
DATA SHEETS
FOR CORRECT
CABLE COLOURS.

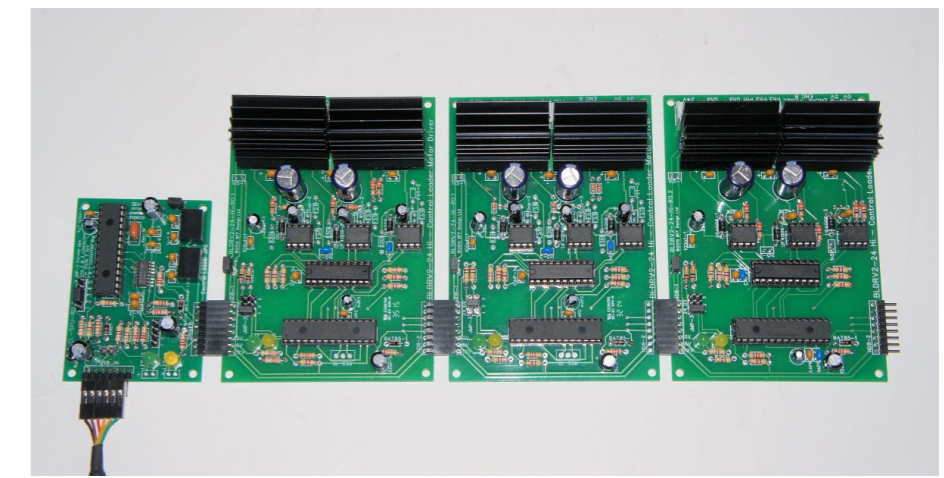
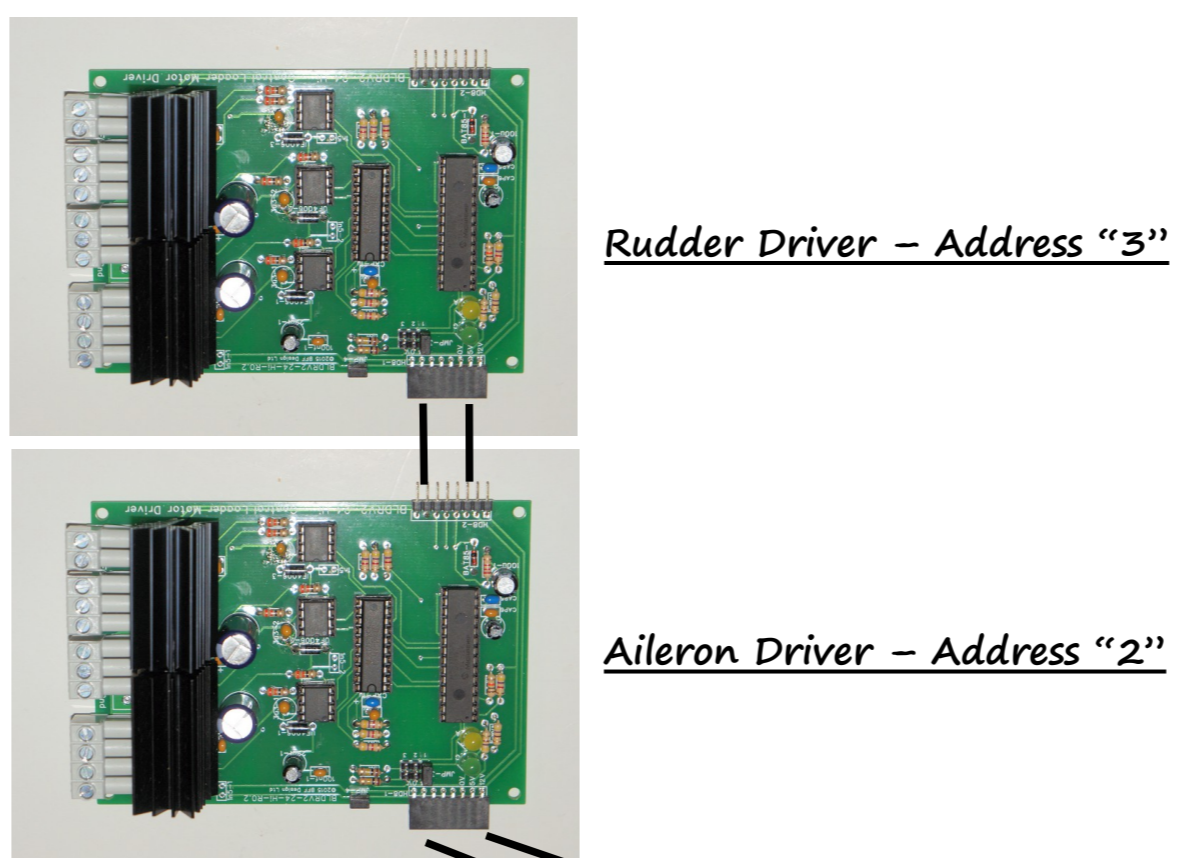
COLOURS SHOWN
IN DIAGRAM ARE
ILLUSTRATIVE ONLY.



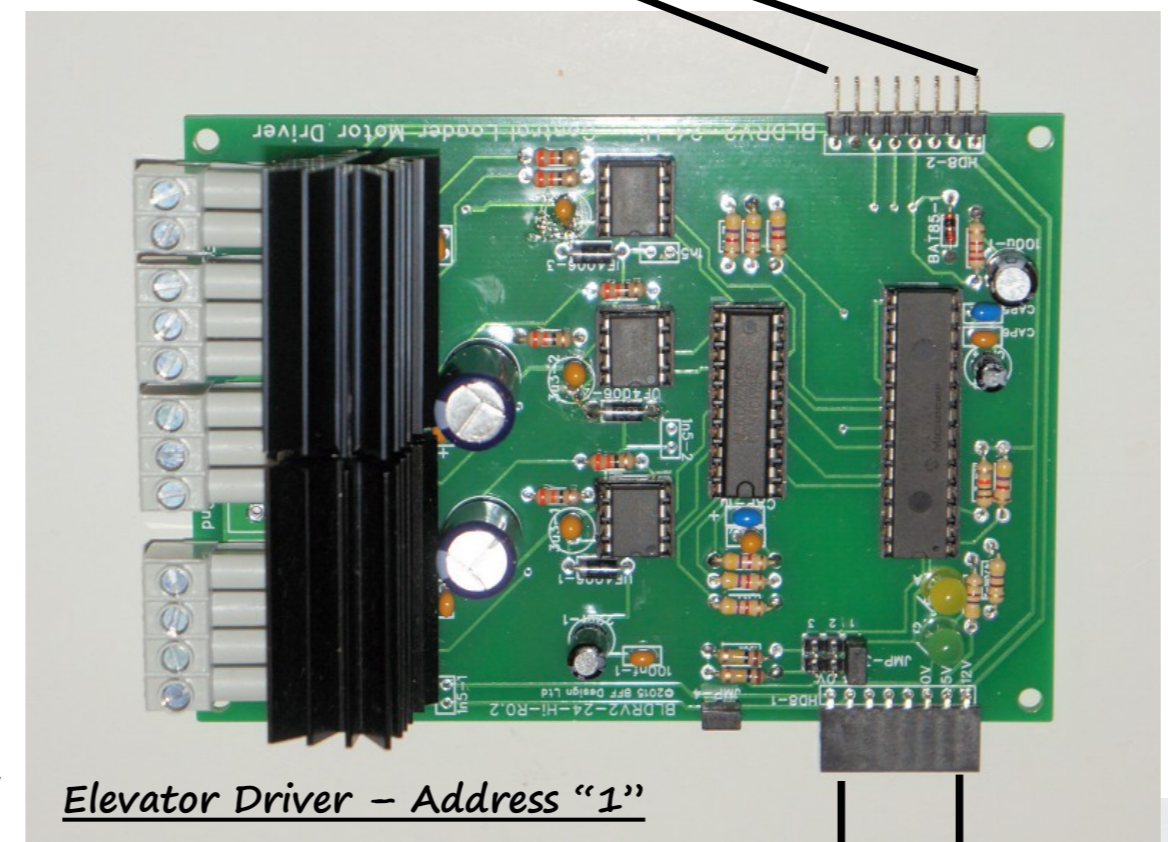
IMPORTANT Note A
24V DC Power Supply (Regulated)
~ 6.5 Amps per card



Leo Bodnar BU0836(A) Joystick Card or similar.. for trim pot or button inputs.



CL_SPU and BLDRV2-24's are normally directly connected as shown



BLDRV2-24

Note 1
PC running BFF CL Software & FS9/X with FSUIPC installed, or X-Plane with XPUIPC.



Note 2

CL_SPU

Note 7

FTDI USB/TTL Cable (inverted RS232)

Note 8

STDP Logic Power Switch (See datasheet)

Shielded USB Cable