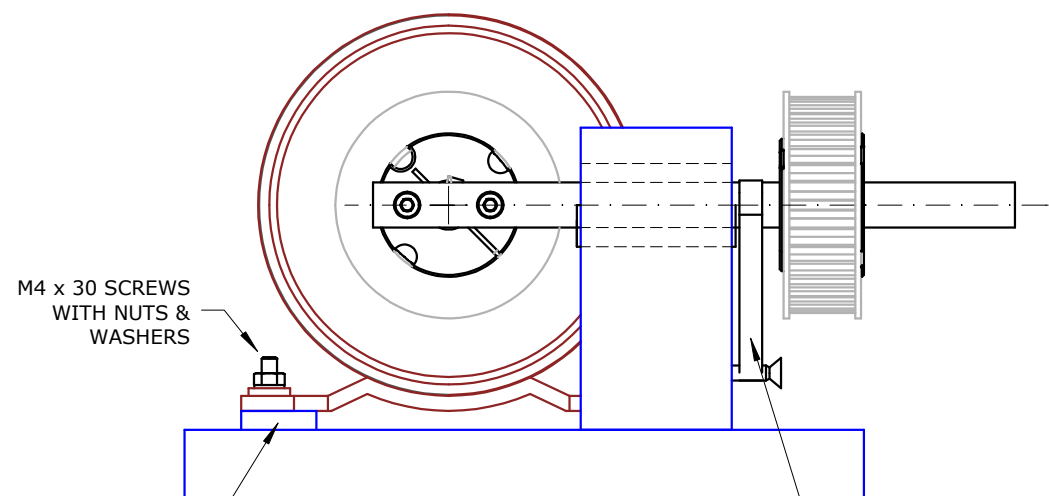
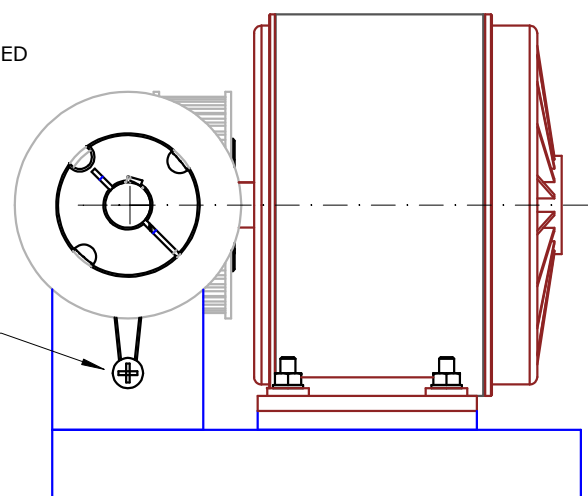
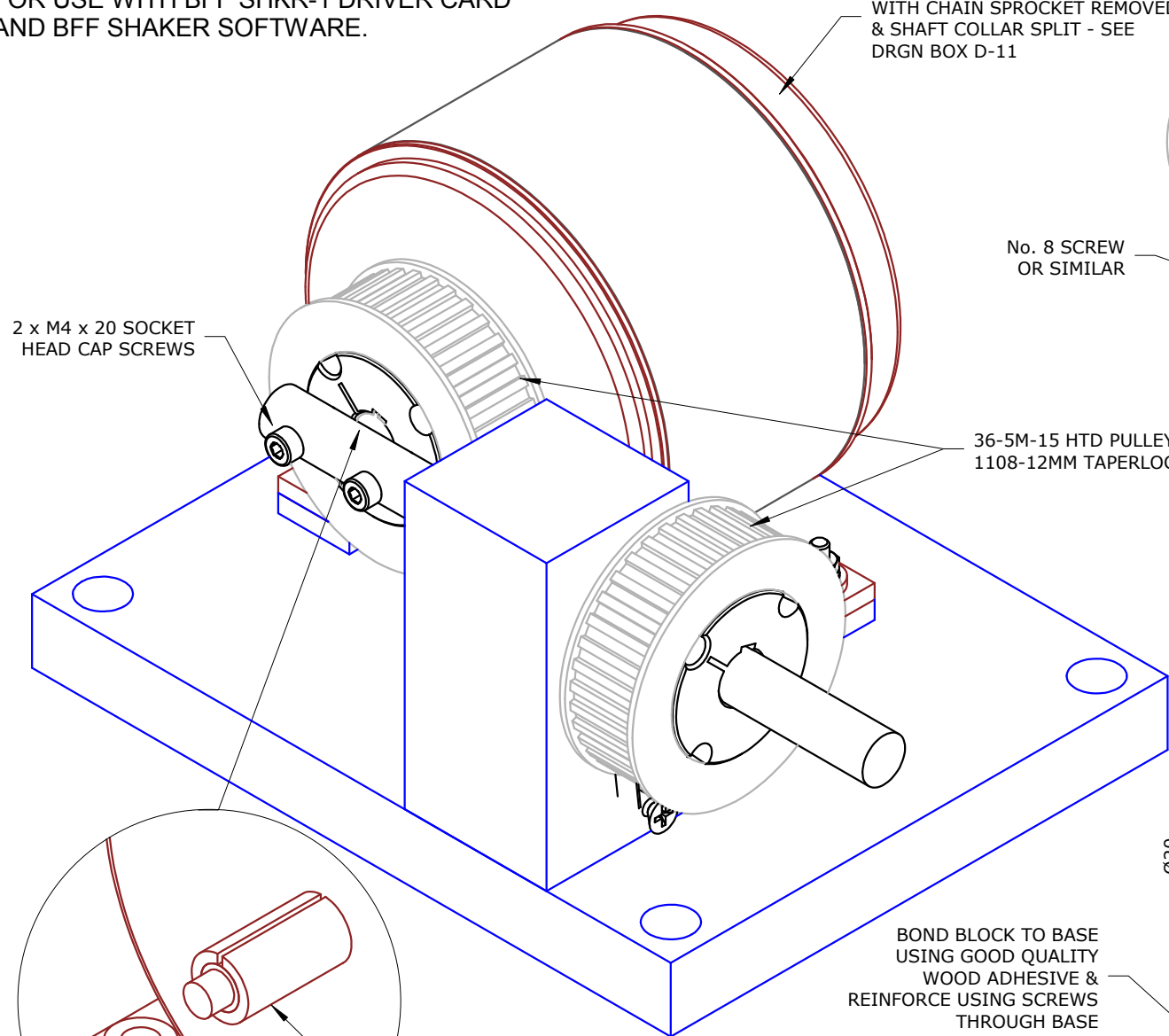


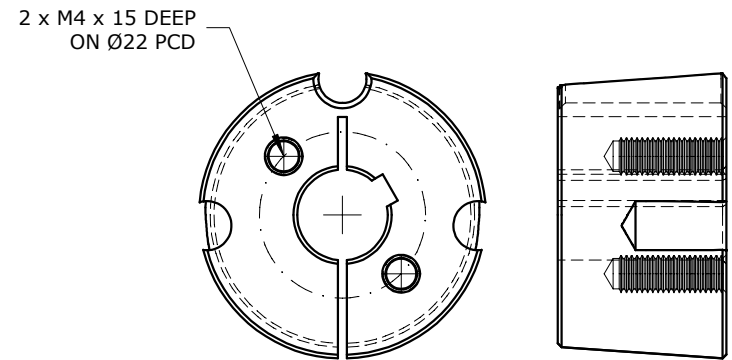
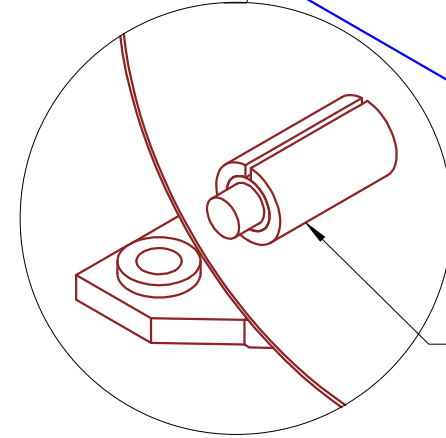
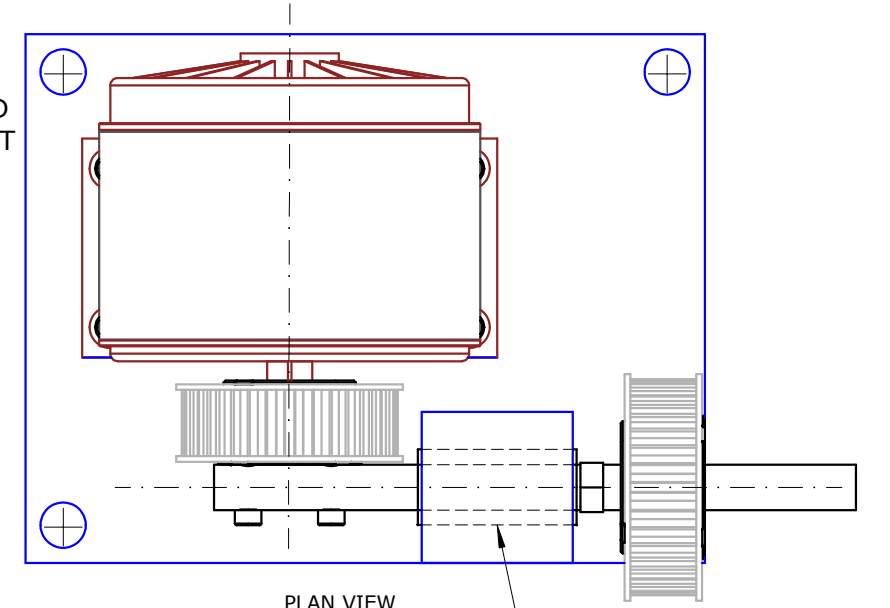
BFF DIY FLIGHT SIM SHAKER UNIT

FOR USE WITH BFF SHKR-1 DRIVER CARD AND BFF SHAKER SOFTWARE.

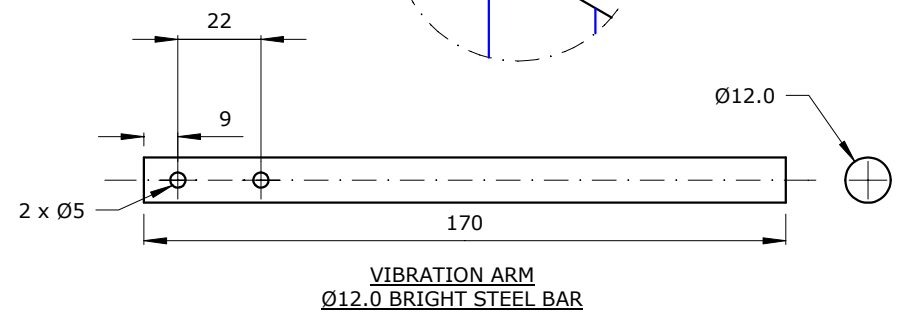
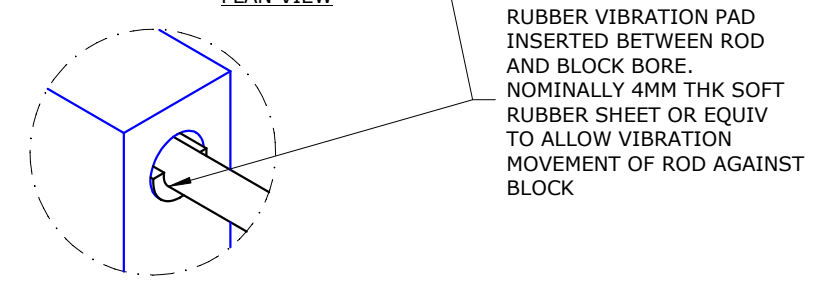
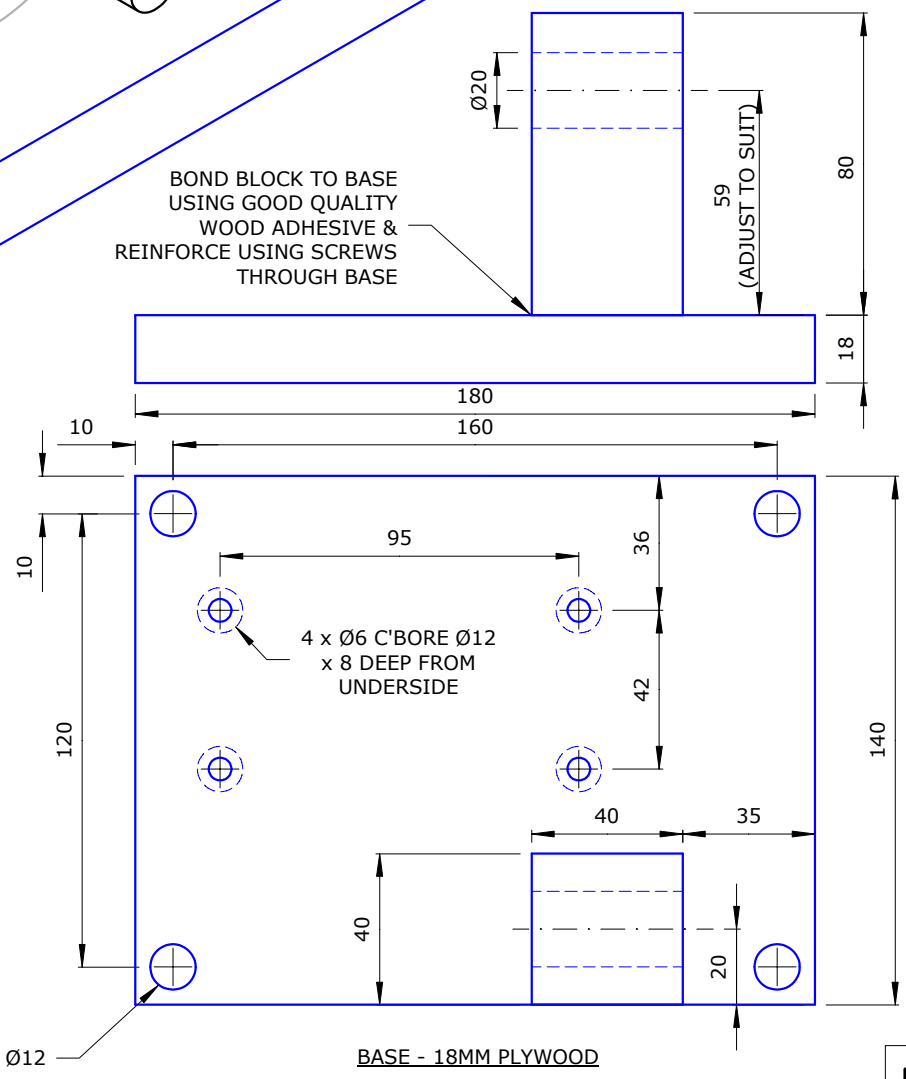
MY1016 24v 250W DC MOTOR WITH CHAIN SPROCKET REMOVED & SHAFT COLLAR SPLIT - SEE DRGN BOX D-11



- NOTES:
1. FIT PROTECTION COVER IF THE UNIT IS LOCATED WHERE IT CAN BE TOUCHED WHEN IN OPERATION.
 2. THE RUBBER MOTOR MOUNTING PADS ARE NEEDED TO ALLOW VIBRATION MOVEMENT OF MOTOR. DO NOT CLAMP THE MOTOR RIGIDLY TO THE BASE.
 3. THE STRENGTH OF THE VIBRATION ARM ELASTIC BAND SHOULD BE ADJUSTED ON TEST FOR BEST VIBRATION TRANSMISSION EFFECT.



BOND BLOCK TO BASE USING GOOD QUALITY WOOD ADHESIVE & REINFORCE USING SCREWS THROUGH BASE



© 2013 BFF Design Ltd. Conditions of use apply. See - bffsimulation.com

TITLE			
BFF SHAKER UNIT			
SIZE	DRAWN BY & DATE	DWG NO	REV
A3	IH 4/13	SHKR1-A000	2
SCALE	UNITS	SHEET	
NA	MM	SHT 1 OF 1	

TH 6/13 - R2 - UPDATED BLOCK TO ENCLOSE ROD