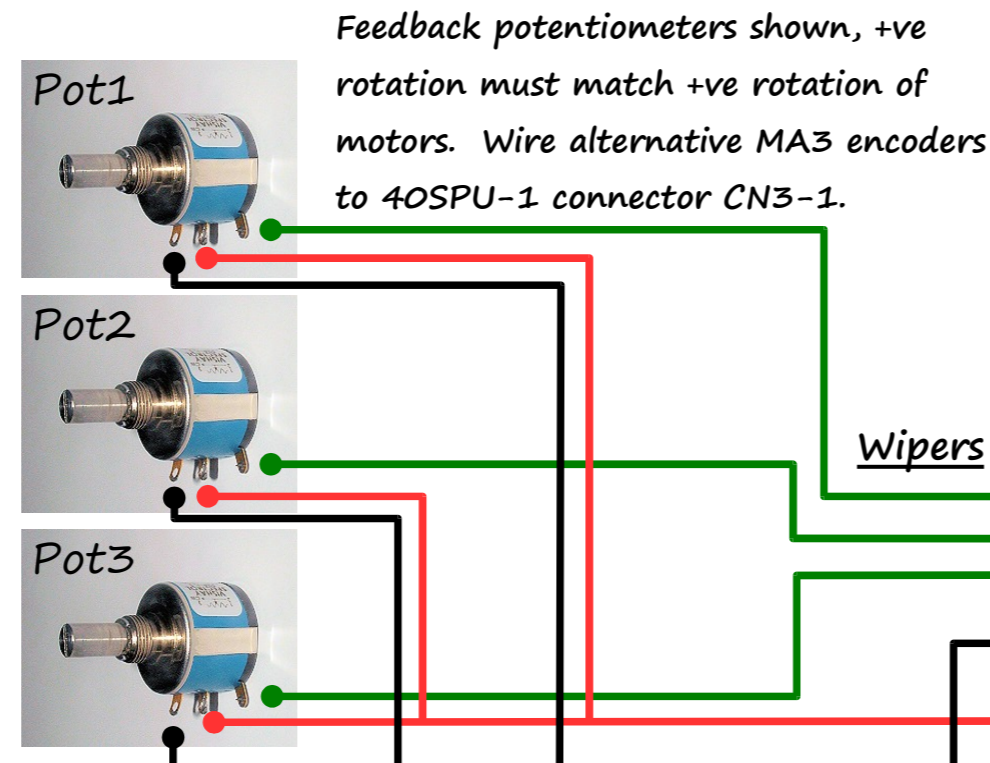
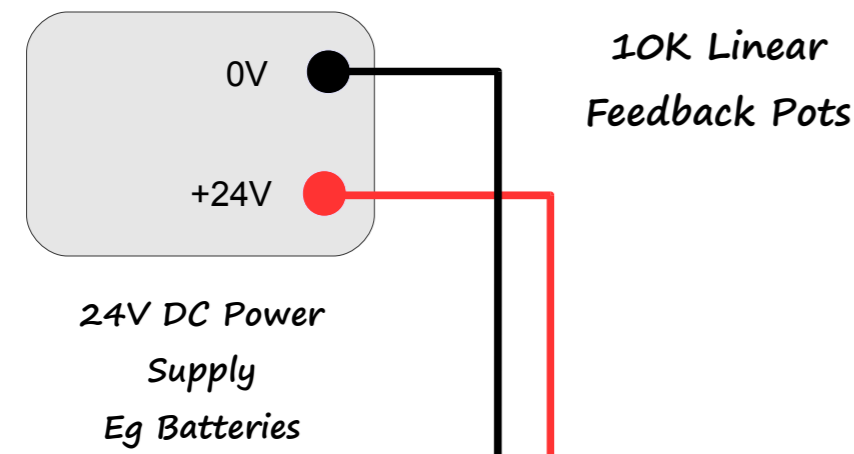


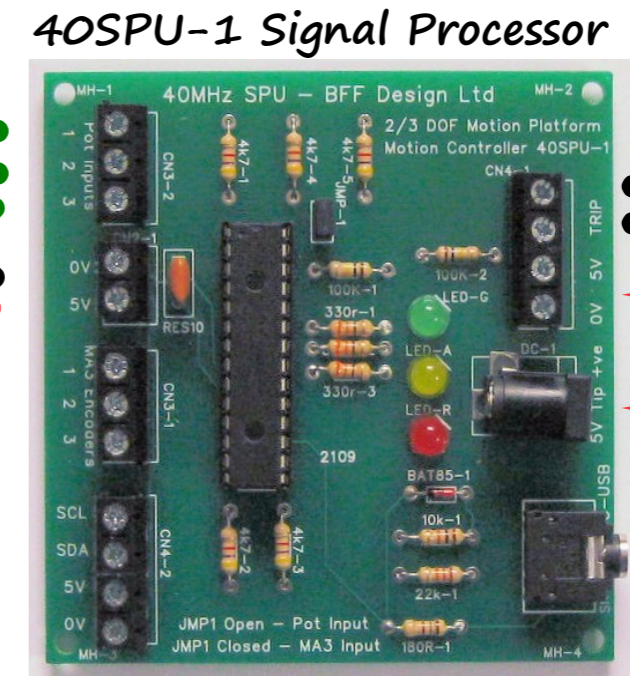
DIY Motion Platform Illustrative System Wiring – With Dimension Engineering SaberTooth 2x25 (or 2x50) Controllers.

24V DC PM Motors up to 25Amp nom ea.
Power supply to match – it must be able to sink current when drive brakes.
If Sabertooth 2x50's used the voltage can be up to 48V with 50 amp per channel.

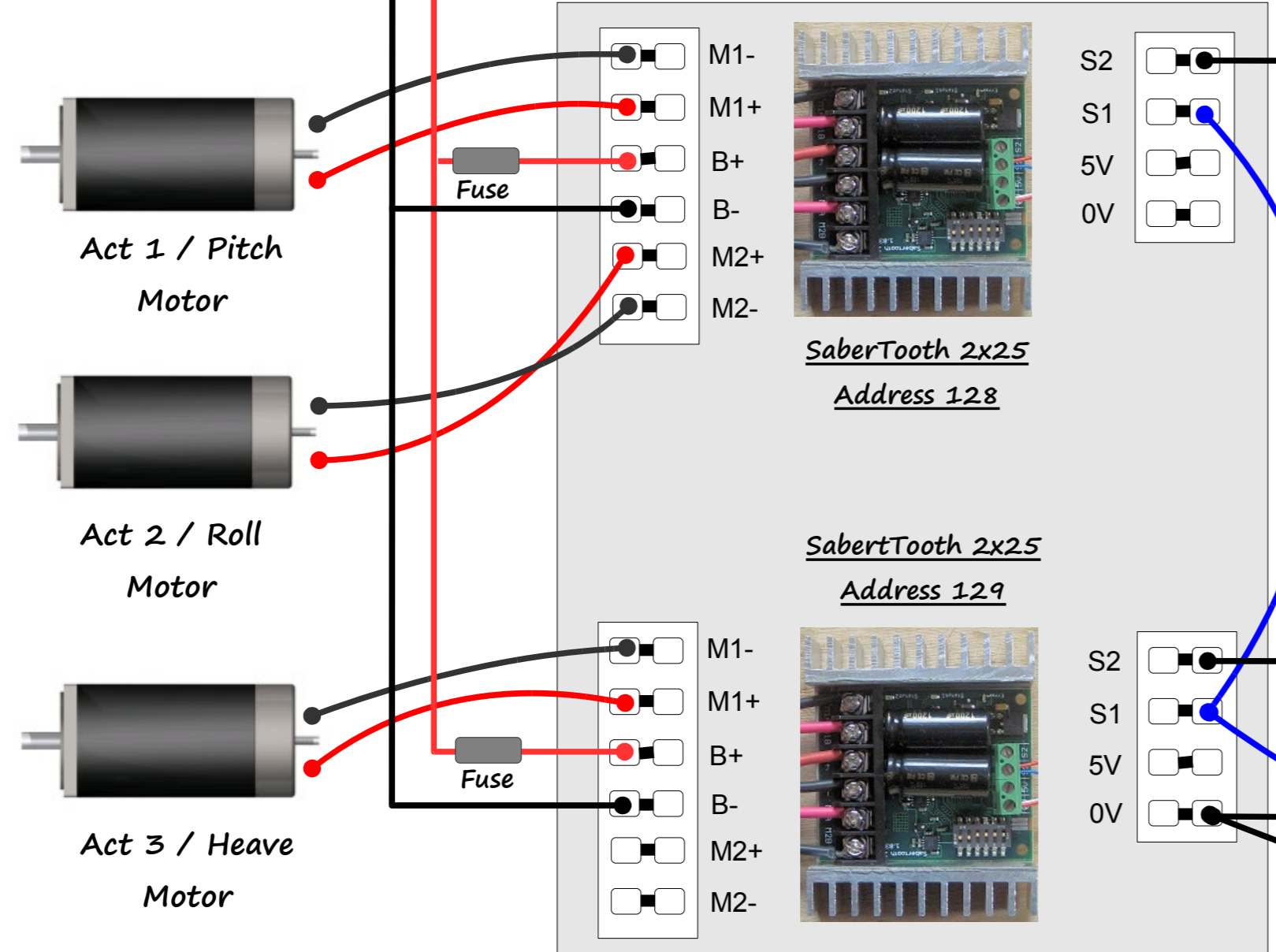


IMPORTANT – the power supply to The 4O SPU-1 MUST be a 5V REGULATED supply of at least 300 mA capacity. An unregulated or inadequate power supply can cause malfunction of the hardware and may result in loss of motion control.

Normally closed "Output Pause" switch



5V DC Regulated (300mA min)



IMPORTANT Drive Cut-off wiring to be used when NO SyRen's in use. Actuator normally OPEN limit Switches for Emergency Cut-off. When wired as shown will allow S2 to be pulled low if any switch is closed. 3 shown – need 6.

From PC PICAXE AXE027 (USB) Or AXE026 (Serial) Input Cable



PC running BFF Motion Driver and PID Servo Controller software.

From PC USB to RS232 TTL Converter Cable

TTL Level RS232

Dimension Engineering SaberTooth Controllers
Shown is 3 DOF arrangement using two Sabertooth 2x25
Controllers (wiring similar for 2x50 controllers).